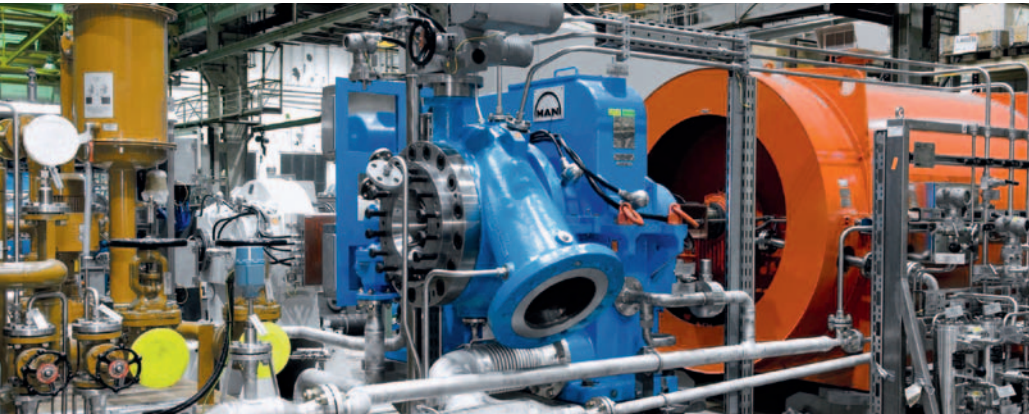


Fuelgas Compressors

Integrally geared centrifugal compressors
acc. to API 617 7th edition

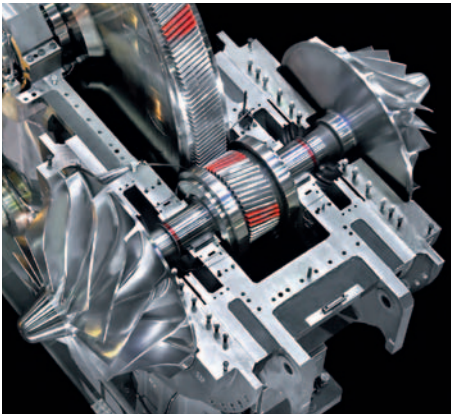


Your advantages

- Up to three rotors with up to six stages cover a wide operating range
- Horizontal gear casing splitline for easy maintenance work
- Clean, oil-free gas compression
- No pulsation
- Small footprint for installation
- Capacity control options by various different methods:
 - Adjustable inlet guide vanes
 - Throttle valve for varying suction pressure levels
 - Variable speed drive
- Combined automatic anti-surge and bypass regulation
- Sophisticated load sharing for optimized plant performance with multiple compressors
- Fuelgas compressors consisting of one to six stages attached to one gearbox
- Lube oil unit, gearbox, compressor casings, sealgaspanel and driver (motor) all mounted on a common base frame ready for shipment
- High pressure ratios and a typical volume flow from 1,500 m³/h up to 20,000 m³/h
- Sealed by tandem dry gas seals buffered with nitrogen
- Various impeller types in order to meet project pressure and flow requirements



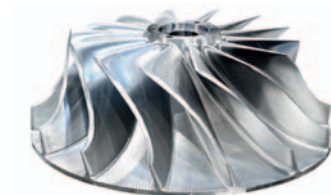
MAN Diesel & Turbo



For a quotation the following information is needed:

- Min./max. suction pressure at compressor inlet
- Min./max. temperature at compressor inlet
- Min./max. volume flow/mass flow
- Gas composition
- Cooling medium
- Maximum allowable discharge temperature, if any
- Nominal discharge pressure

Please provide a short project description.



For more information or an offer for our fuelgas compressors please contact:

Mr. Edin Krajcin

Head of Sales
Midstream & Gas Turbines
Process Industry
Phone +49 208 692-9326
Fax +49 208 692-2644
edin.krajcin@man.eu

Mr. Uwe Haßfeld

Project Manager Sales
Head of Team Fuelgas
Midstream & Gas Turbines
Process Industry
Phone +49 208 692-2413
Fax +49 208 692-2383
uwe.hassfeld@man.eu

MAN Diesel & Turbo

Steinbrinkstr. 1
46145 Oberhausen, Germany
www.turbomachinery.man.eu